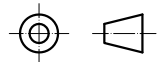
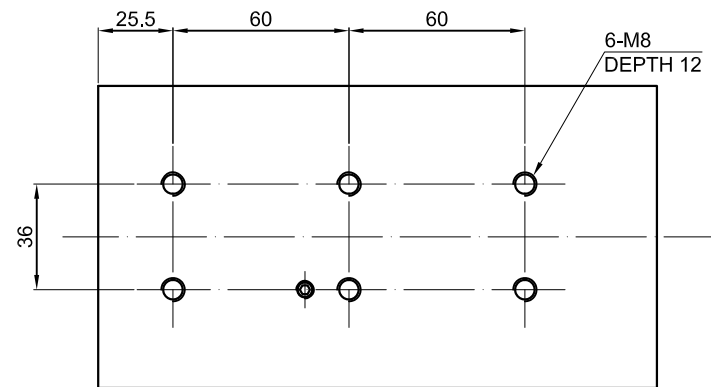


↑  
B

B VIEW BOTTOM OF SHELL



| SPECIFICATION       | VALUE                     |
|---------------------|---------------------------|
| POWER (Kw)          | 4.5                       |
| VOLTAGE (VAC)       | 380                       |
| RATED CURRENT (A)   | 9.5                       |
| MAXIMUM SPEED (RPM) | 18000                     |
| FREQUENCY (Hz)      | 300                       |
| NUT MODEL           | ER32                      |
| COLLET (mm)         | Ø6、Ø6.35、Ø12、Ø12.7        |
| RUNOUT OFF (mm)     | LESS THAN 0.005           |
| BEARINGS            | 2x7008C(P4) + 2x7004C(P4) |
| COOLING             | AIR COOLED                |
| MATERIAL            | STAINLESS STEEL           |
| LUBRICATION         | GREASE                    |
| WEIGHT (Kg) [lb]    | 12.4 [27.34]              |



|       |           |           |
|-------|-----------|-----------|
| mm    | APVD      | 5.24.2019 |
| UNIT  | CHKD      |           |
| 3:1   | DRN       |           |
| SCALE | SIGNATURE | DATE      |

**SPINDLE MOTOR**

**GDZ120×103-4.5C4**